



ComT 2.0

Tilt mounting system for PV installation on tin roof's



ComT 2.0

The Clenergy PV-ezRack® ComT 2.0 is an universal and fast mounting system for PV installation on all residential or commercial flat tin roofs. With its flexible and scalable design it enables perfect utilization of roof surface available. With tilt angles of 5°, 10° or 15°, the PV panels can generate a maximum output.

Main Benefits

Easy and Quick Installation

Highly pre-assembled legs enable easy and fast installation. With only one Z-Module, the legs can easily click into the slot of Rails at any given points. The storage space is greatly reduced due to the innovative 15° Rear Leg Extension, thereby saving the cost of warehouse management.

Optimize Energy Output

The Legs can mount PV panels that width up to 1200mm. And with 5°, 10° and 15° tilt angles options, PV-ezRack® ComT 2.0 can offer optimized energy output.

Universal

The adjustable clamps can mount framed PV panels that height from 30 to 46mm. And with Clenergy various frameless clamps, PV-ezRack® ComT 2.0 can mount every size of frameless or thin film panels.

Technical Details

Roof type	Tin and Flat Roof
PV Panel Dimension	Up to 2400 x 1200mm
Setting Angle	5°, 10° and 15°
Module Orientation	South/North, East-west: Landscape
Material	Main Components: AL6005-T5 Fasteners: SUS 304
Standard	GB50797 AS NZS1170.2 EN1991 JISC8955 ASCE 7-10 SANS 10160
Warranty	12 years

ComT (South/North)



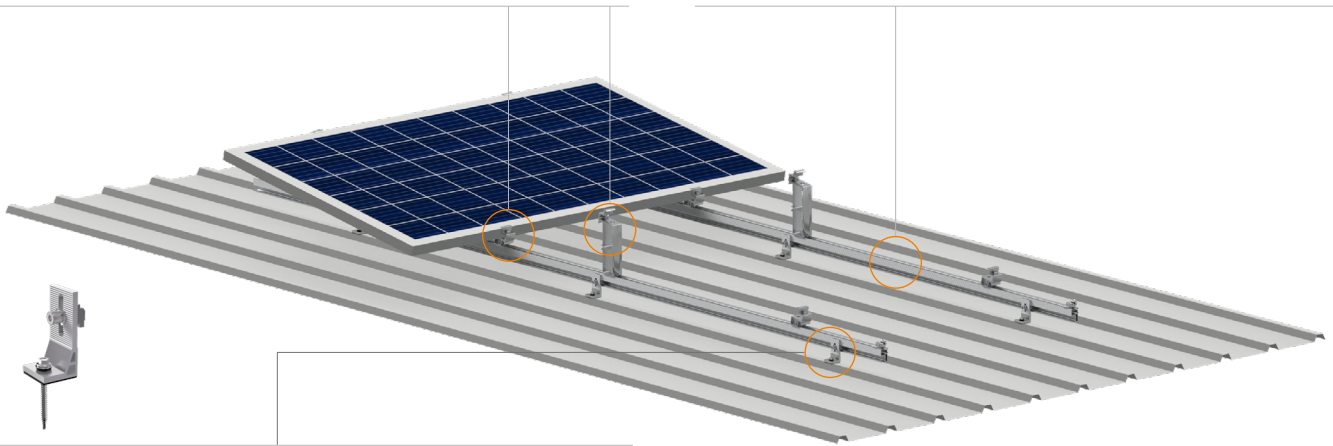
FL-COMT/Z/G & RL-COMT/Z/G
Leg Assembly

Highly pre-assembled Legs enable easy and fast installation. Manufactured from aluminum offer excellent corrosion resistance.



ER-R-B50

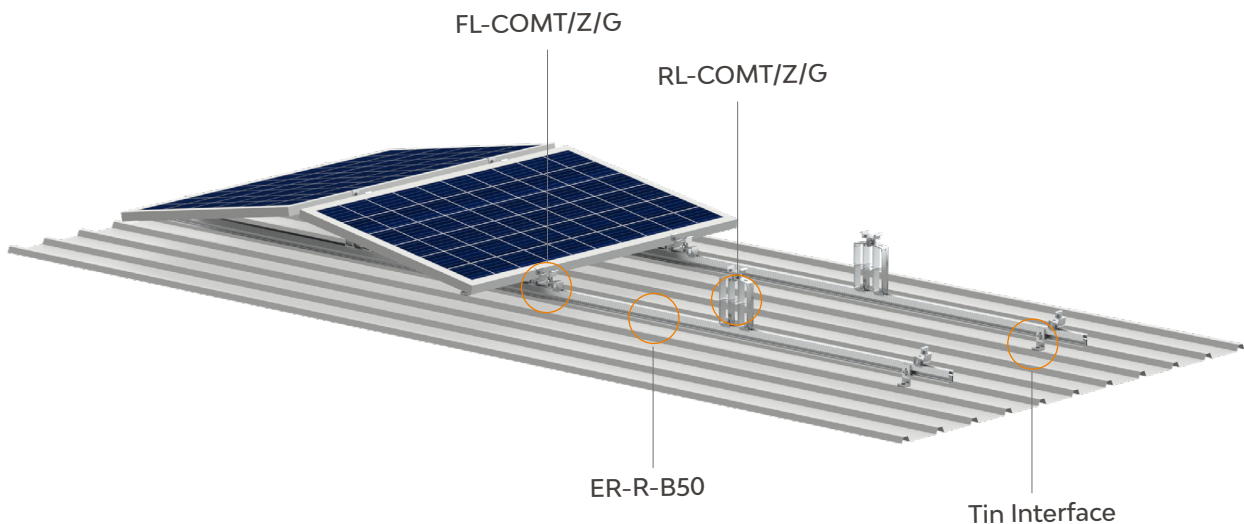
Specifically developed to achieve larger spans, the B50-Rail has reduced the number of required fixings. The B50-Rails have two patented Z-Module channels with one at top for panel mounting and the second on side for connecting to the roof interface.



I-05A-6.3/70
Tin Interface

The robust aluminium L-feet, which provides a height adjustment of almost 30mm. It comes with Z-Module, Click Module or ez Connection, which is pre-assembled and helps to ease the Rail installation.

ComT (East - West)



FL-COMT/Z/G

RL-COMT/Z/G

ER-R-B50

Tin Interface



PV-ezRACK®

Clenergy China

999-1009 Min'an Rd,
Huoju Hi-tech Ind. Dev. Zone
Xiang'an District 361101, Xiamen,
Fujian, China

Phone: +86 592 311 0088
Email: sales@clenergy.com
Web: www.clenergy.com

 @ClenergyGlobal / @ClenergyClub / @ClenergyAUS / @ClenergyThailand

 @Clenergy_global  @Clenergy  @Clenergy 

A Clenergy Technologies Company

