

Dear Valued Partners,

As we usher in the promising year of 2024, we would like to extend our heartfelt gratitude for your unwavering support throughout 2023. It has been our privilege to collaborate with your esteemed business, and we are eager to fortify this partnership in the year ahead.

We are excited to notify you that we have a fresh shipment of cutting-edge stock available and are thrilled to introduce an array of innovative products that are meticulously designed to elevate your solar panel installation projects.

At Clenerack, we remain dedicated to providing top-tier solutions that align seamlessly with your evolving needs and we look forward to another year of shared successes and continued growth.

COM-T FOR FLAT ROOF IBR



The **COM-T** for flat roof IBR introduces a single fixing of each front and rear leg for a faster installation but it does not affect the system's structural capacity.

The **ComT** can be setup as 5, 10 or 15 degrees of tilt.

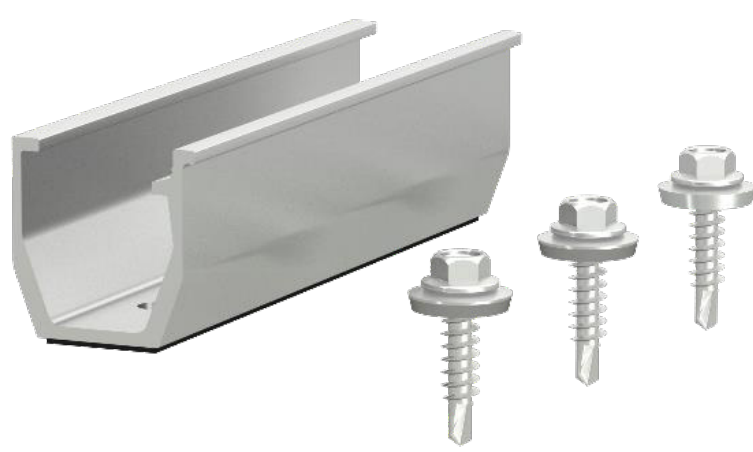
ASCENT FOR FLAT ROOF CONCRETE

The **PV-ezRack Ascent** is widely used for PV- Module mounting on flat roofs.

To make it robust and ensure longevity, it is manufactured from aluminium alloy and stainless steel.



U-SUPPORT FOR IBR



A cost effective rail-less solution for IBR roofs.

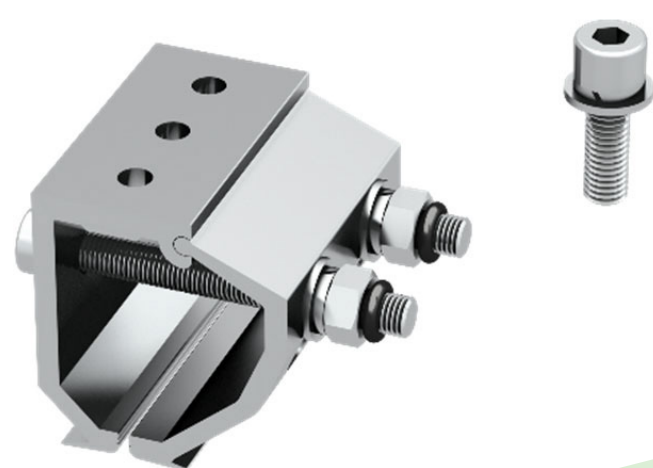
This system allows for solar panels to be mounted in landscape.

The fixture is fixed to the roof sheetings using self-drilling screws that tap into the sheeting, thus not requiring fixing to the purlins

UNIVERSAL KLIPLOK

The **universal Klip-Lok** interface is used to install your solar racking on Klip-Lok style roof sheeting.

The **universal kliplok** can be used on 80% of kliplok roof profiles.



FOR MORE INFORMATION AND ORDERS,
KINDLY GET IN TOUCH WITH US.

UNIT 9E, CONSANI INDUSTRIAL PARK, 21ST STREET 8,
EPPING AVE, ELSIES RIVIER, CAPE TOWN, 7490

WWW.CLENERACK.CO.ZA

021 001 3790